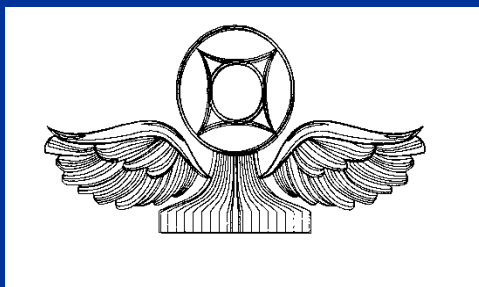




NAVAL AIR STATION NORTH ISLAND



COURSE RULES BRIEF



Ms Chris Hulet, Tower Chief



Airfield Hours



■ North Island (KNZY)

- ALL RWYS ARE ACTIVE AT ALL TIMES
- 0630 Monday through Thursday Field open 24 Hrs.
- Friday – Field closes at 2200
- Saturday & Sunday - 0800-2200

After hours operations and holidays require prior coordination with the Airfield Manager.



Airfield Contacts

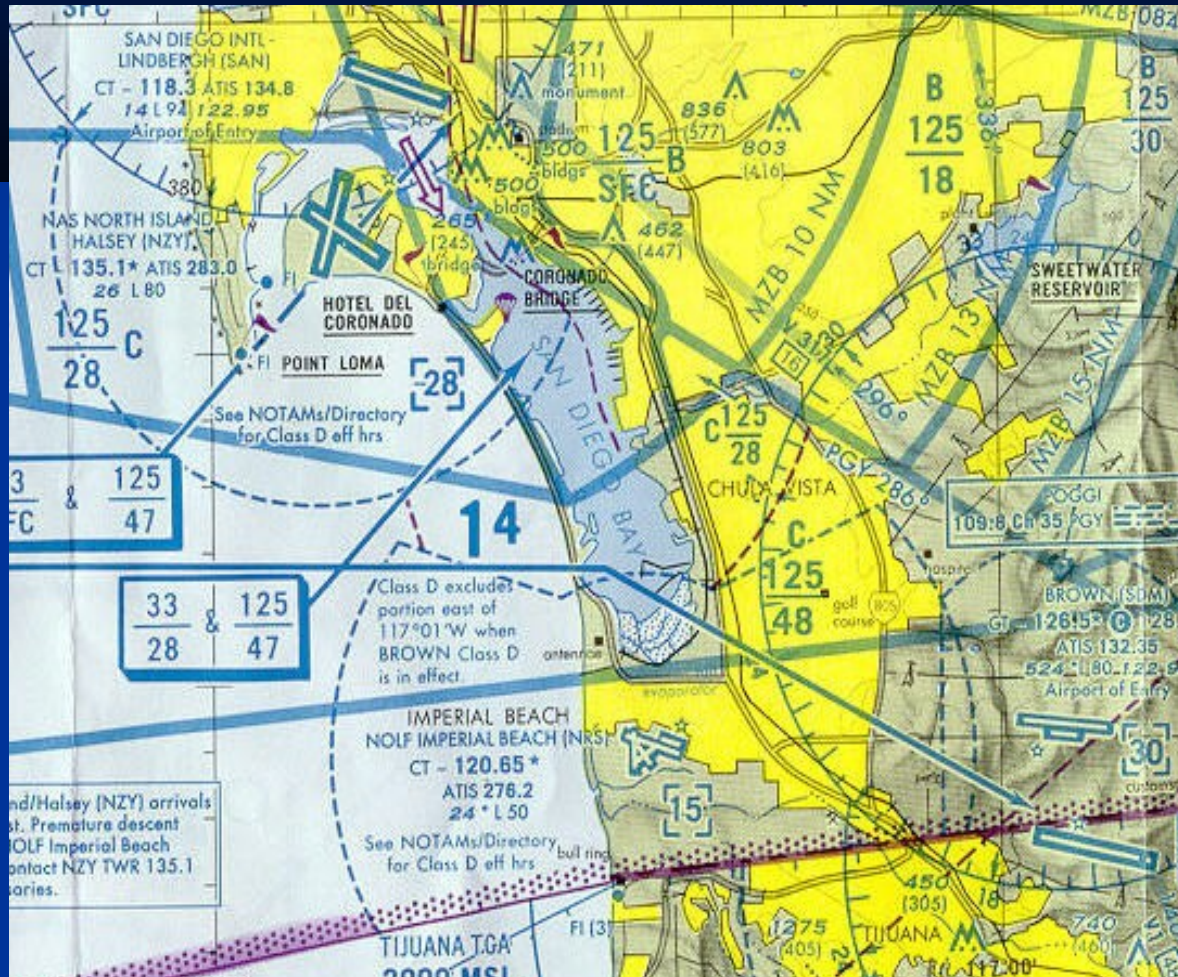


ATC Contact Numbers

- ATC Facility Officer – LT Gonzales 545-8238
- ATC LCPO – ACCS Douglas 545-8239
- Tower Chief – Ms Chris Hulet 545-0194
- Radar Chief – ACC Diaz 767-1522
- NASNI ODO – Rotating watch 545-8233
- Facility Watch Supervisor 545-6796



AIRSPACE



Class D Airspace dimensions:

- 4.3nm radius
- up to but not including 2800' excluding SAN airspace 2 1/2 miles North
- 10-mile extension to the SE (Class Echo) for instrument approaches.



Airfield Contacts



FREQUENCIES

- SoCAL TRACON 317.55/125.15
- GROUND 363.25/118.0
- ATIS 317.8
- NZY TOWER 336.4/135.1
- NZY TOWER(Back-up) 340.2
- CLEARANCE 288.25/128.4
- Operations Duty Officer 355.5



RUNWAY 29/11

- Runway 29: 7500' x 200' is the *primary instrument runway*
 - Approach Lighting System w/Sequenced Flashing Lights
 - centerline lights
 - OLS with associated wave off lights
 - E-28 *short field* arresting gear 2600' from approach end
- Runway 11:
 - Centerline lights
 - E-28 *short field* arresting gear 1500' from approach end



RUNWAY 36/18

■ Runway 18: 8000' x 200' is the *primary departure runway*.

- REIL lights
- Centerline lights
- PAPI
- E-28 *short field* arresting gear 1850' from approach end

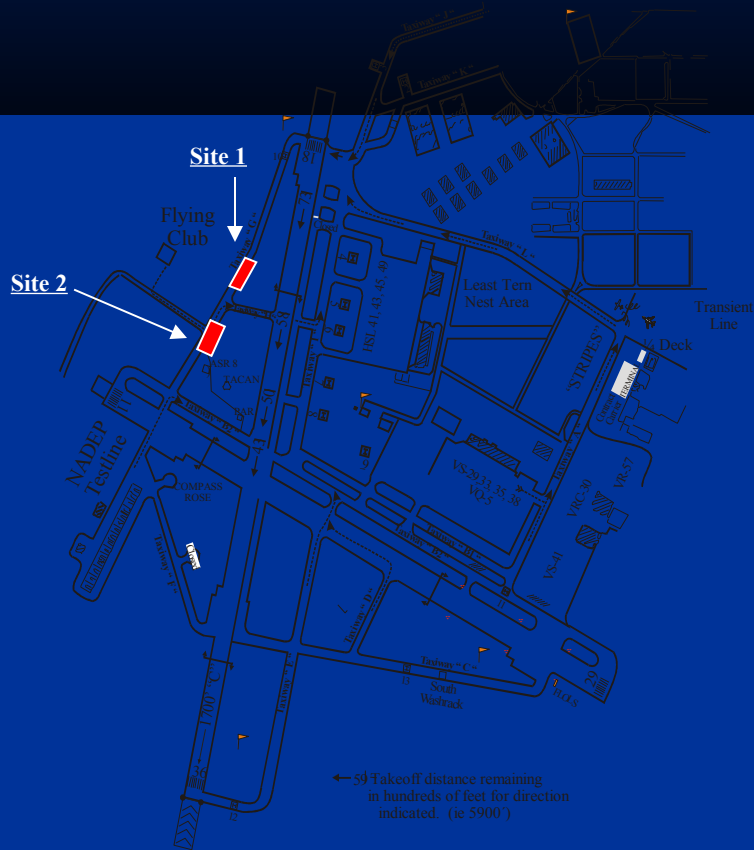
■ Runway 36: 8000' x 200'

- Approach Lights
- REIL lights
- Centerline lights
- PAPI
- E-28 *short field* arresting gear 1700' from approach end
- **MON-THUR AFTER 2200L**
- **FRIDAY AFTER 1800-0700 MONDAY**



REFUELING LOCATIONS

- Hot Refueling Pit (SITE 1 & 2) on TAXIWAY GOLF
- Site 1 0900-2300 M-F
- Site 2 1000-2300 M-F
- Must be complete by 2300
- A/C unable to hot refuel may make a fuel request w/ their lineman.
- Ordnance other than inert not authorized in the Pits.





FLIGHT PLANNING

- Flight Planning and Weather facilities are located at Bldg 516 second deck.

- ODO 545-8233 FAX 8265
- FLIGHT PLANNING 545-0348
- WEATHER 545-6032

- **NO SQUADRON PERSONNEL ON THE AIRFIELD OTHER THAN DESIGNATED RAMP AREA; CONTACT THE ODO FOR AIRFIELD ACCESS**



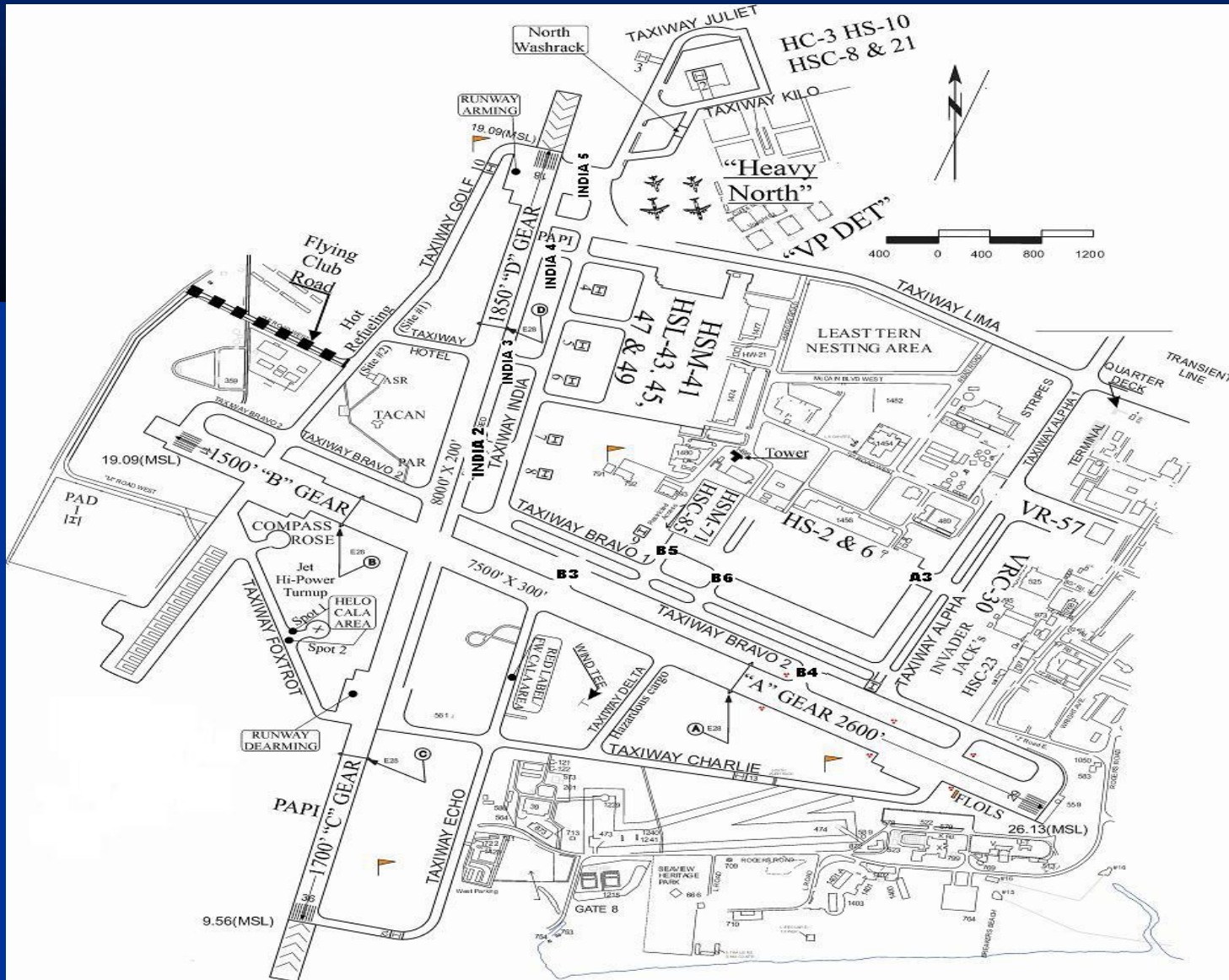
STEREOTYPE ROUTES

■ Filing Procedures:

- Squadron flight schedule- call Clearance Delivery w/callsign, number of a/c, route desired, and ETE.
- DD-175
- A/C shall use tactical call plus a/c side number on flights to W-291 or ships offshore. All other stereotype flights require tail letters and side number.



TAXI ROUTES





DEPARTURE PROCEDURES

- Rwy 18: Primary departure runway. After takeoff, climb straight ahead, adhering to any altitude restrictions imposed by tower or IFR clearance. Execute the NASNI Departure.
- Rwy 11: Winds from the EAST. After takeoff, turn right 30 degrees or greater, as soon as possible to reduce noise in the city of Coronado, BUT DO NOT OVERFLY CLUB or LODGE AREA NEAR DEPARTURE END OF RUNWAY.



DEPARTURE PROCEDURES

- Rwy 29: After takeoff make a climbing left turn to avoid overflying Point Loma or any associated piers west of the airfield
- **Caution**: *Helicopters at 300' and below may be flying over the CHANNEL, crossing runway 29 extended centerline in either direction, aircraft departing or completing a touch-and-go shall climb rapidly after takeoff and cross east edge of CHANNEL at or above 500'*
- Rwy 36: Upon request. Climbing right turn to avoid the city of Coronado



ARRIVAL PROCEDURES

RADAR APPROACHES

PAR RUNWAY 29OS/CL & 36. Circling approach to runway 18 for category A & B aircraft only. Weather permitting.

ASR RUNWAY 29 & 36.

TACAN RUNWAY 29 & 36.

HOTEL VISUAL RWY 29

LOC "A" & "B" (Coordinated through SCT).

VOR/DME RUNWAY 29

RNAV (GPS) RUNWAY 36



ARRIVAL PROCEDURES

Rwy 29: OVERHEAD

Break Altitude: 1500AGL as directed by Tower

Pattern Altitude: 1000AGL, Left Traffic

Caution: *Low level Helicopters in the vicinity at or below 300'*

• Rwy 29 PA290S

–Fixed wing a/c on an offset GCA or TA will be instructed to proceed visually at 1 mile from touchdown/runway (2 DME). Decision Height is at 2 miles.



ARRIVAL PROCEDURES

- Rwy 18 (VFR only)

- A/C requesting Bay approach for Runway 18 shall cross 4 DME East of the airport 1000' or above. Be extremely cautious of GCA a/c inbound to Runway 29. Aircraft altitudes are approximately the same where the Runway 29 extended centerline is crossed entering the BAY.



ARRIVAL PROCEDURES

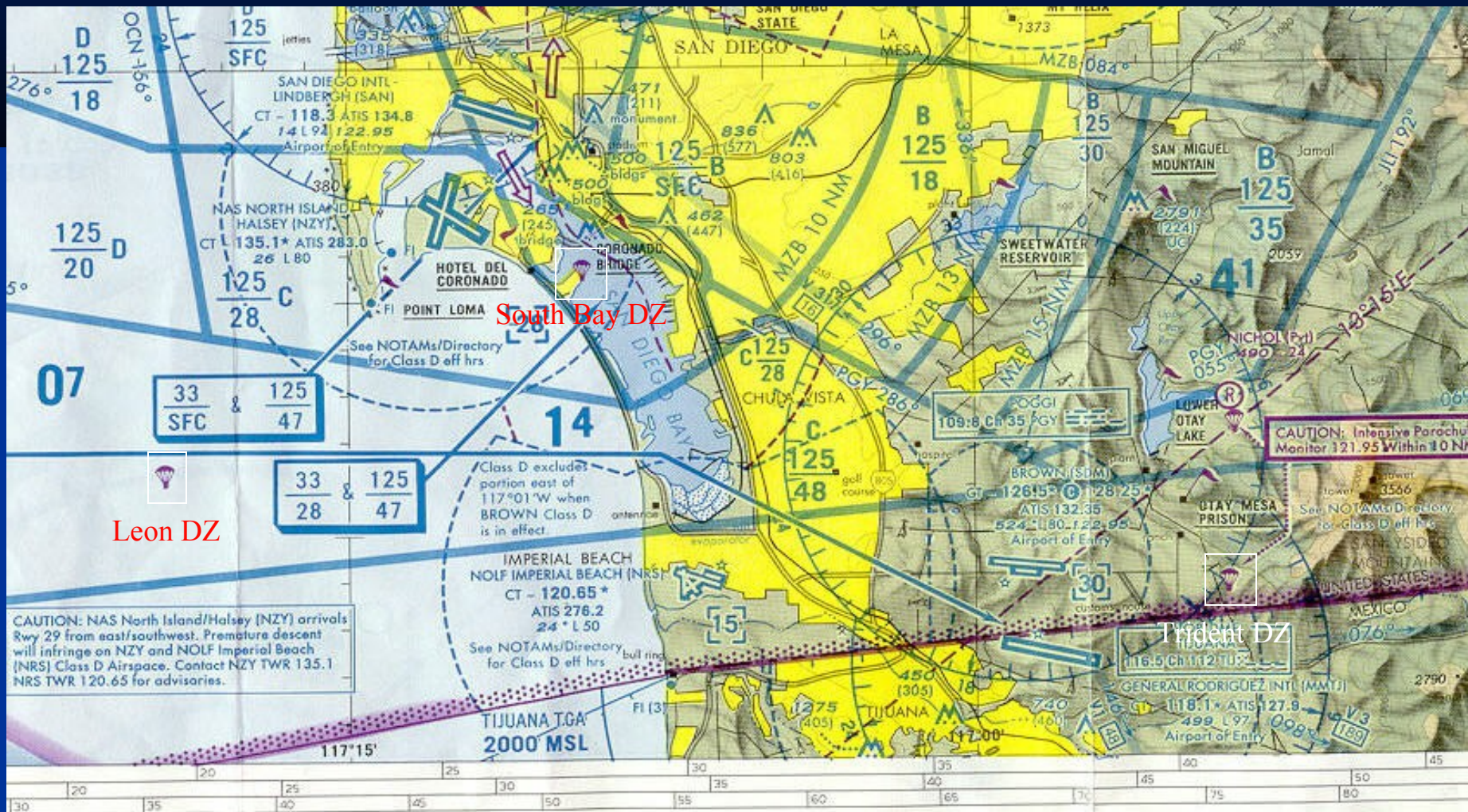
• RWY 36

CAUTION: Highest point at Pt. Loma 544'

–At night there are flashing white lights on the jetty, which extends South of the runway and crosses the extended centerline. These lights point toward a brightly lit magazine area to the left of the runway.



PARADROP OPERATIONS





DROP ZONES

- TRIDENT - located Southeast of Brown field on the PGY 120/4.5 or the NZY/17. All a/c shall monitor 121.95Mhz and make a blind broadcast of its arrival in the area, altitude and intention.
- LEON - NZY 210/8 1000yd radius. Located beneath SAN Class Bravo airspace. Conflicts with NZY traffic. Two miles NORTH OF HELO DIP AREA BRAVO 1.

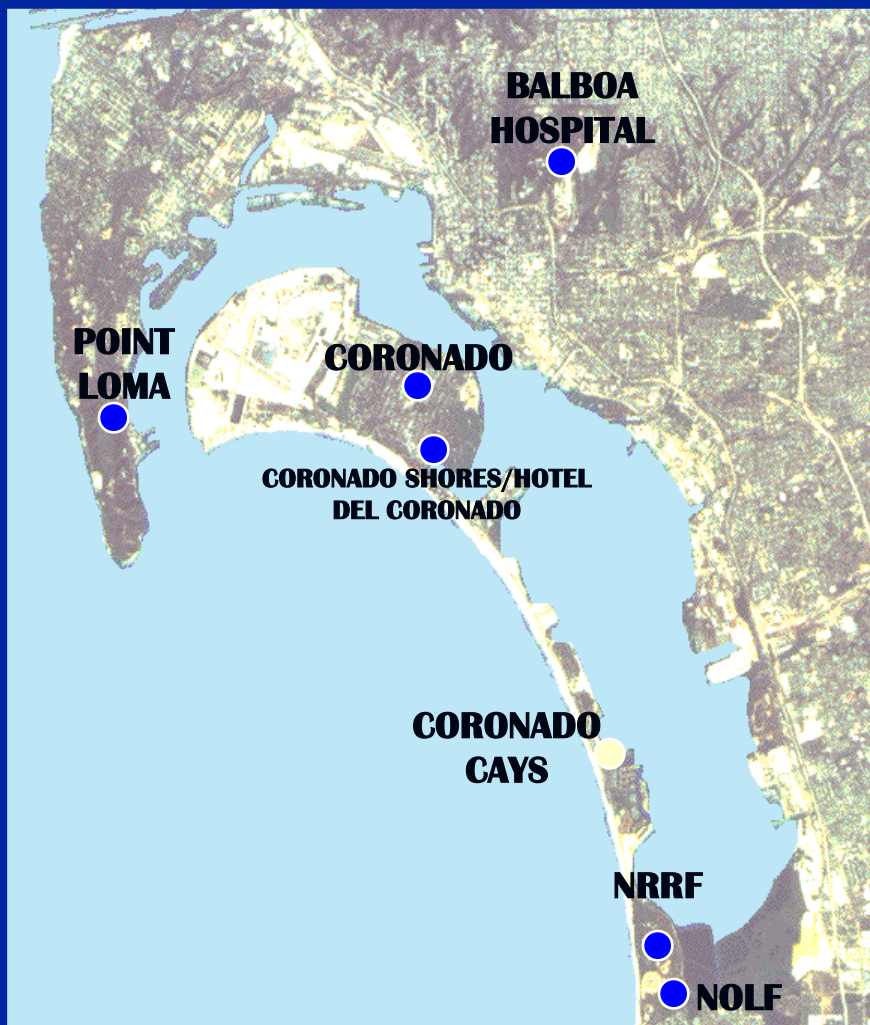


SOUTHBAY DROP ZONE

- Located abeam NAB Coronado in San Diego Bay. Runway 29 instrument approaches and all a/c operations in the south bay area must be suspended.
 - NZY tower is approving authority and may cancel or suspend the paradrops at any time.
 - If the paradrop is above 2,800' SCT will be the controlling agency. If the drop is below 2,800' NZY tower will be the controlling agency. A/C Commander shall inform the controlling agency "5 minutes to jump", "1 minute to jump" and "Jumpers away". Broadcasted in the ATIS.



NOISE SENSITIVE AREAS



• Military VFR flight over the following communities below 2500' is prohibited:

– *City of Coronado
Pt. Loma*

– *Coronado Cays-6.5nm SE
of airport on Silver Strand*

– *Coronado Shores Condos
and Hotel Del Coronado*

2.3 to 3nm on Rwy 29 Final

Avoid overflying homes
adjacent to Ream Field.



BIRD ACTIVITY

■ ***PILOTS REPORT ANY STRIKES TO ATC ASAP***

■ **NASNI**

- Least Tern, Snowy Plover, breeding reserves
- Burrowing Owls
- Coots on the golf course

■ **NOLFIB**

- Located next to wildlife preserve
- Operate to minimize impact on wildlife and people





FEED BACK

Contact ATC for any issues pertaining to procedure, service, or any comments you may have regarding a specific situation. Tours may be coordinated thru ATC.

PLS. PROVIDE SQUADRONS CONTACT INFO



QUESTIONS?

